

WTS151: Step Transition from R26 to R32 Waveguides

Description

WTS151 (Fig. 1) is a precision milled step transition between R26 (WR340) waveguide and R32 (WR284) waveguide with an extension on the R26 port. This extension enables the use of general M6 bolts with nuts for attaching the transition to HOMER Analyzers, Autotuners, or other components.

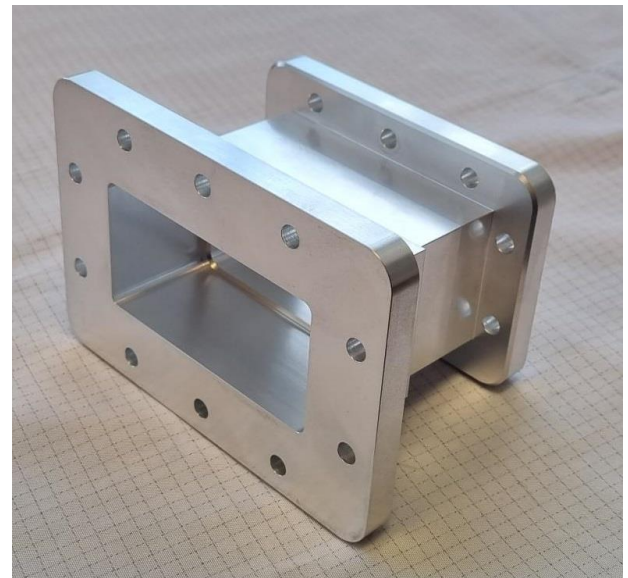


Fig. 1. WTS151 step transition.

Specifications

Frequency range	2200 – 2700 MHz
Port 1 waveguide type	R26 (WR340)
Port 2 waveguide type	R32 (WR284)
Transition type	Step
Flange types	IEC
Return loss (2425 – 2475 MHz)	> 30 dB
Peak working power	30 kW
Dimensions (L x W x H)	85 x 138.2 x 95.2 mm
Mass	580 g

Dimensional Drawing

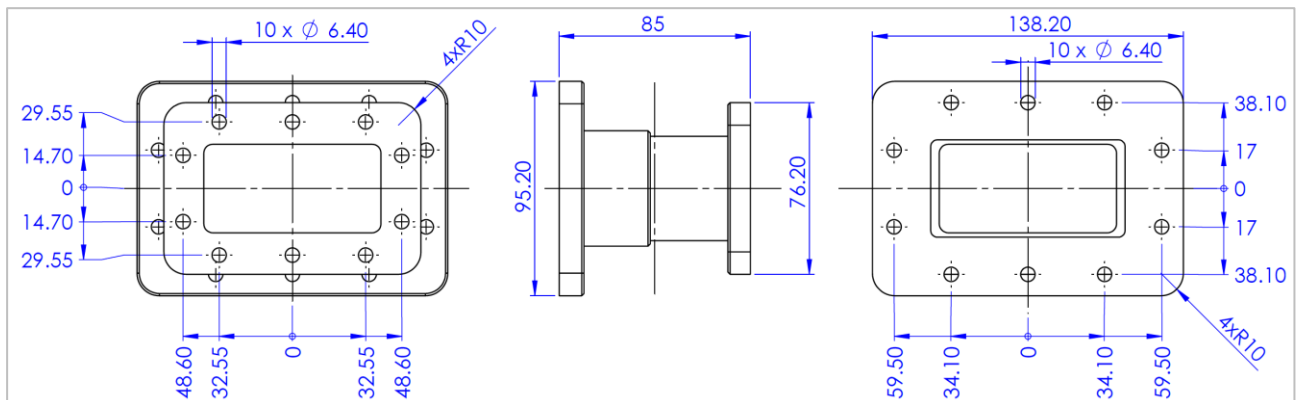


Fig. 2. Basic WTS151 dimensions (in millimeters).